



Ember™ ‘FL 20.80-4’ Encore™ ‘FL 20.34-183’ and selection FL 19.66-220

Agritech

May 7, 2024

Vance M. Whitaker, Cheryl Dalid, Luis Osorio,
Natalia Peres, Seonghee Lee, Anne Plotto
and Steve Sargent



Ember™

- Lower *Neopestalotiopsis* susceptibility
- Robust but compact plant and excellent flavor



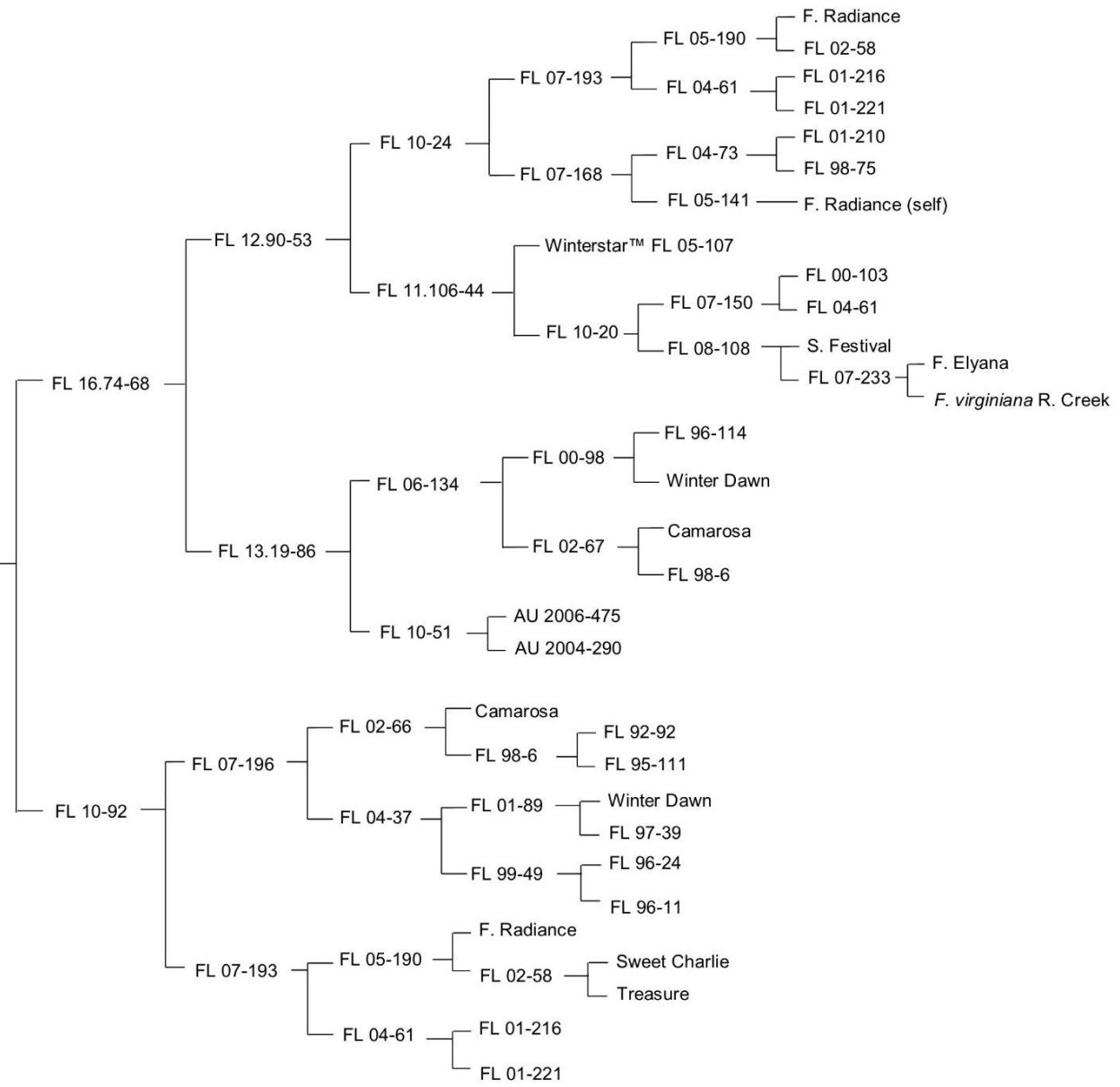


Ember™





Ember™ 'FL 20.80-4'





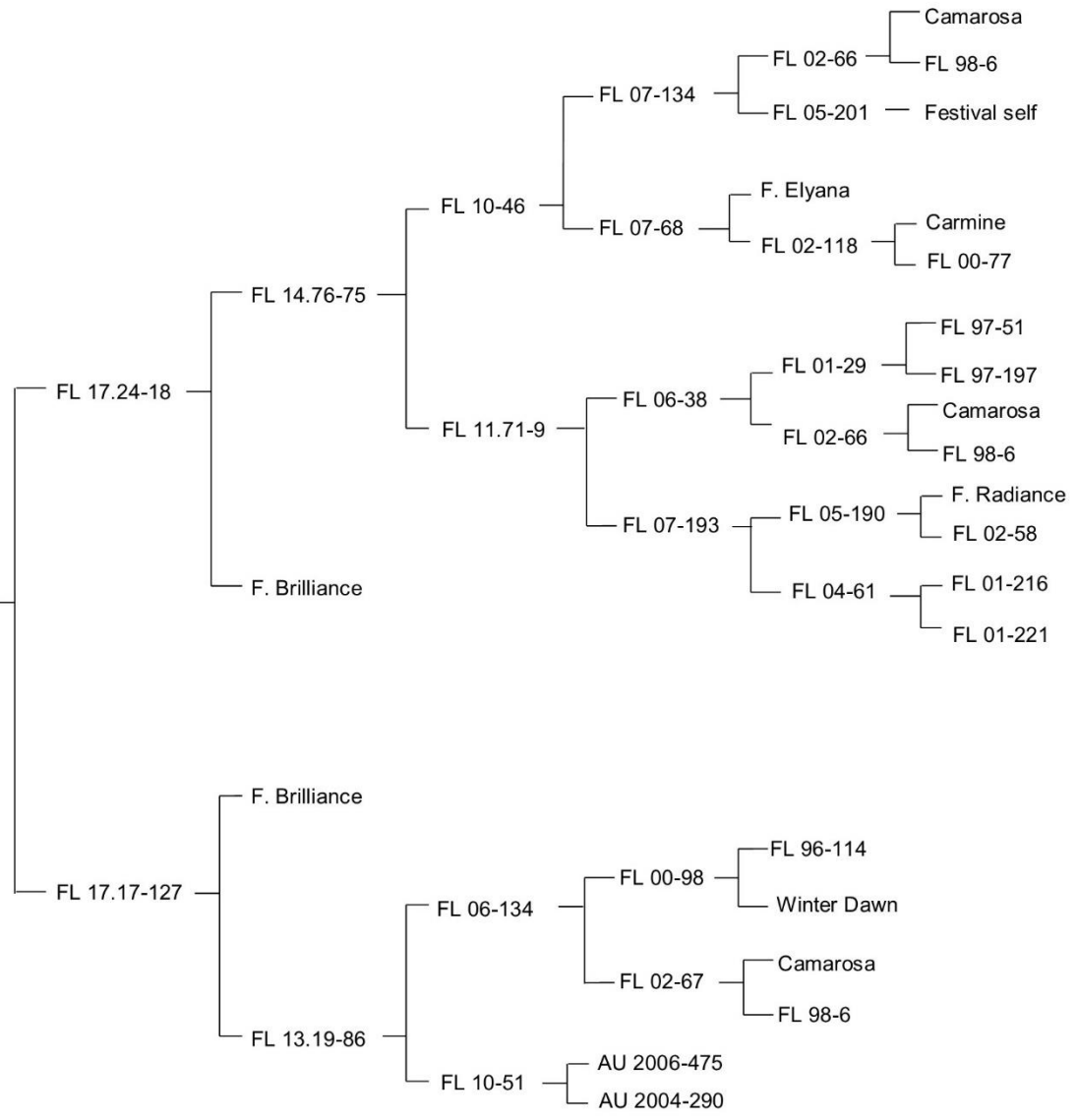
- Vigorous plant
- Large fruit size, excellent shape and color







Encore™ 'FL 20.34-183'





Cultivar	SSC (%)	pH	TA (%)	SSC/TA
<i>January 2023</i>				
Brilliance	7.23 c	3.66 ab	0.80 c	9.16 b
Medallion	8.91 b	3.59 b	0.88 ab	10.24 ab
Ember	9.63 a	3.74 a	0.87 bc	11.47 a
Encore	8.67 b	3.59 b	0.98 a	9.26 b
<i>February 2023</i>				
Brilliance	7.60 a	3.81 a	0.63 b	12.04 ab
Medallion	8.50 a	3.76 ab	0.64 ab	13.03 a
Ember	8.22 a	3.79 ab	0.64 ab	13.01 a
Encore	7.69 a	3.71 b	0.71 a	10.94 b
<i>March 2023</i>				
Brilliance	6.87 b	3.82 a	0.56 c	12.35 a
Medallion	9.27 a	3.77 a	0.71 ab	13.12 a
Ember	8.51 a	3.76 a	0.65 b	13.17 a
Encore	7.47 b	3.67 b	0.76 a	9.65 b

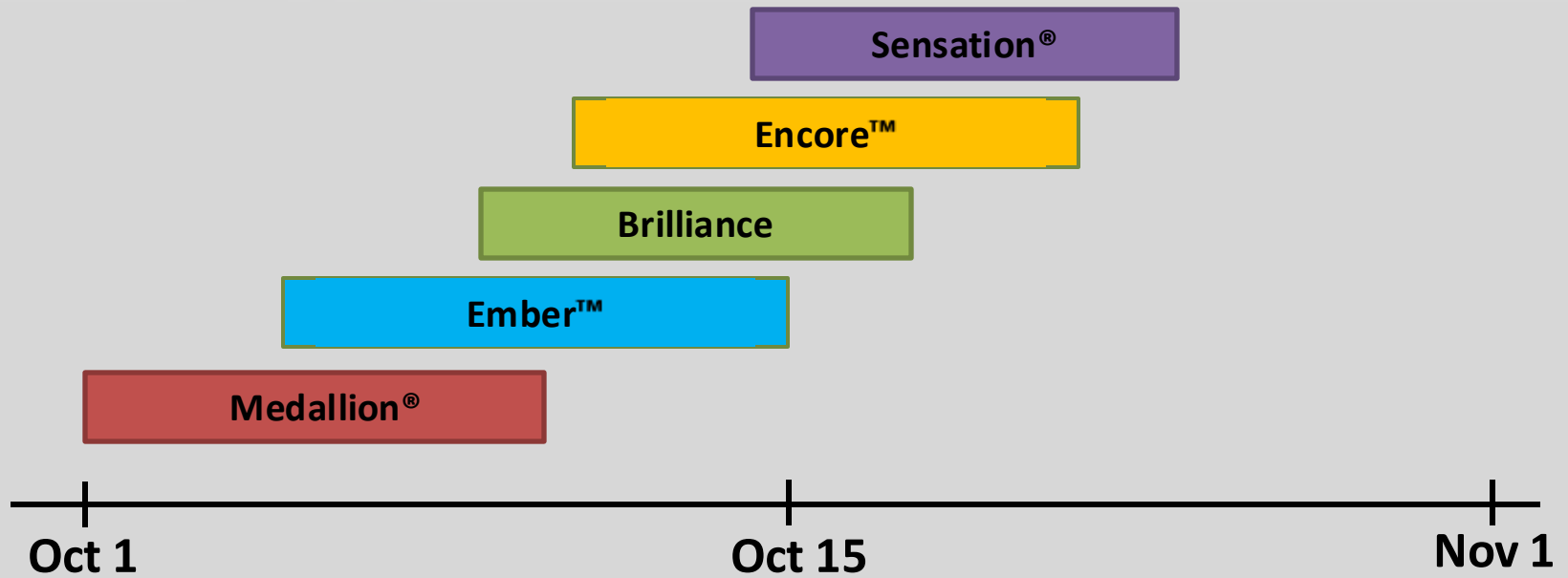


Marketable Yield

Marketable Yield (flats/acre)			
	Nov	Dec	Nov + Dec
2022-23			
Brilliance	72	352	423
Medallion	1	455	456
Ember	36	426	462
Encore	136	400	536
2023-24			
Brilliance	64	287	351
Medallion	41	319	361
Ember	35	394	429
Encore	148	387	535

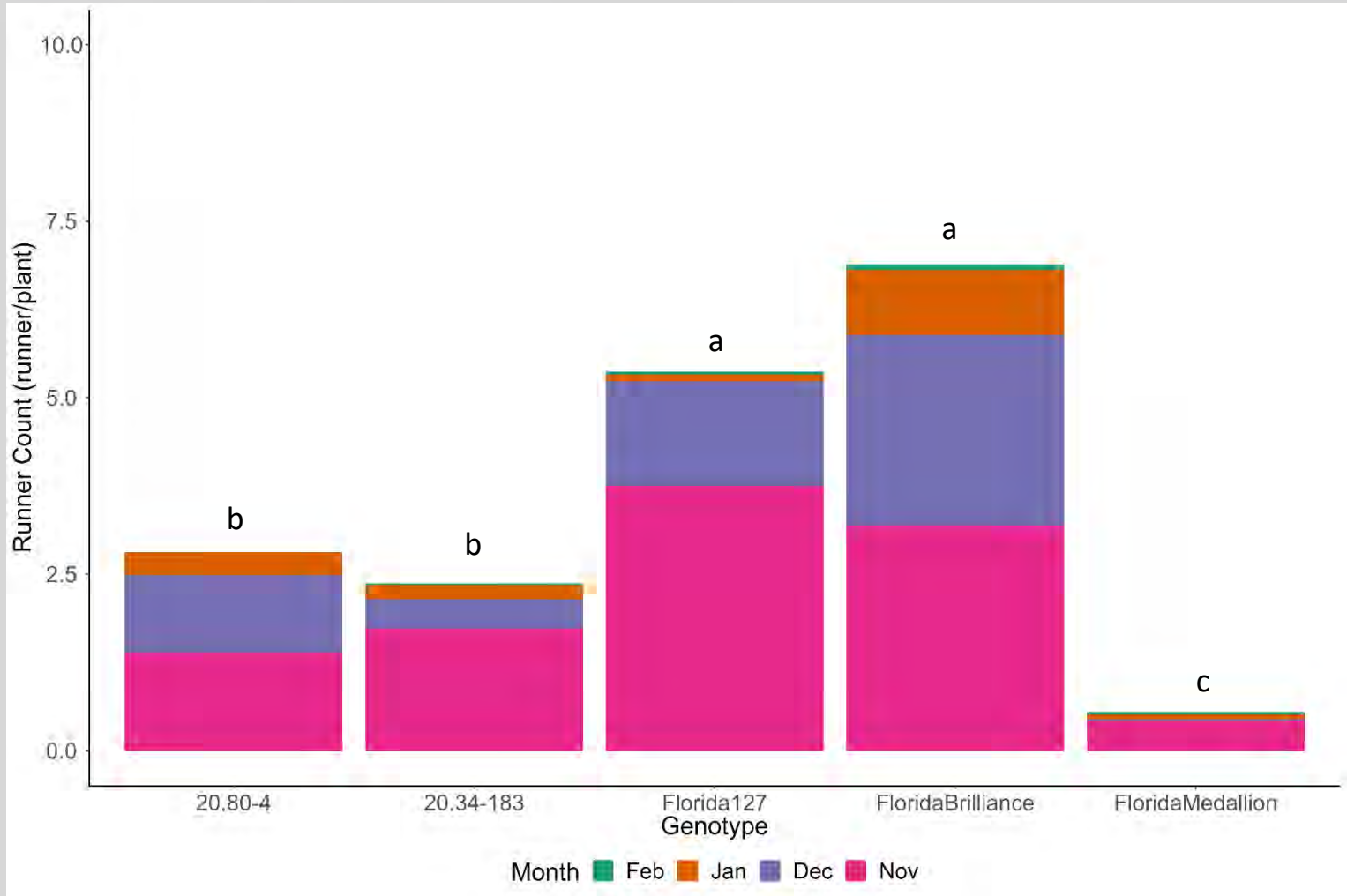


Planting Dates





Runnering 2022-23





Disease Overview

Disease	Brilliance	Medallion	Encore	Ember
Anthracnose fruit rot	R	S	MS	R
Angular leaf spot	MS	MS	MS	MS
Botrytis fruit rot	S	S	MS	MS
Charcoal rot	MR	S	S	MS
Colletotrichum crown rot	S	MS	S	MS
Neopestalotiopsis sp.	HS	S	S	MS
Phytophthora root rot	S	S	MS	MS
Powdery mildew	MR	S	MR	MS

HR = highly resistant; R = resistant; MR = moderately resistant; MS = moderately susceptible; S = susceptible; HS = highly susceptible



Peres Lab 2023-24

Cultivar	Disease Rating		
20.74-80	4.75	g	HS
Brilliance	4.67	fg	HS
Beauty	4.42	fg	HS
20.59-378	4.29	efg	HS
20.71-50	4.25	efg	HS
20.43-156	4.04	defg	HS
19.16-273	4.00	defg	HS
Medallion™ 'FL 16.30-128'	3.92	defg	S
Encore™ 'FL 20.34-183'	3.88	defg	S
20.27-633	3.83	defg	S
19.66-220	3.75	def	S
Pearl™ 'FL 16.78-109'	3.42	cde	MS
Ember™ 'FL 20.80-4'	3.33	bcd	MS
Pearl™ '18.52-66'	2.75	abc	MS
17.76-92	1.88	ab	MR



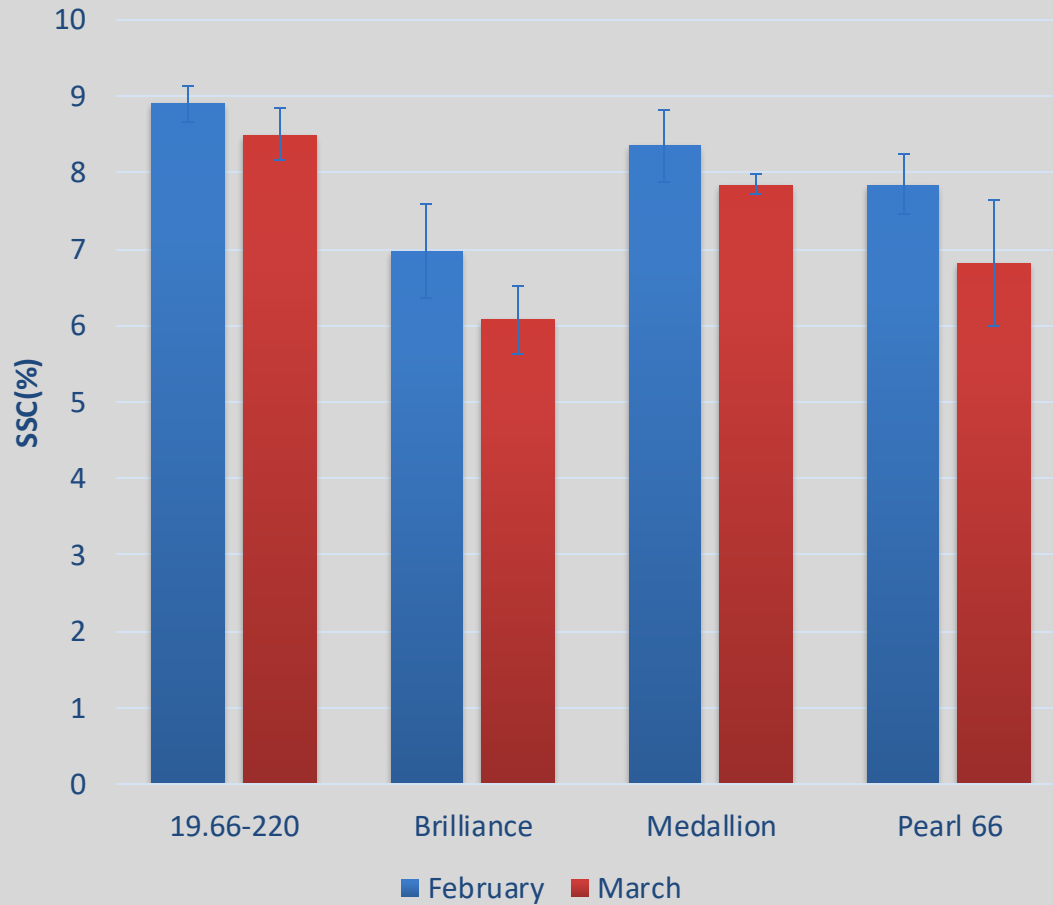
- Larger fruit size, less pink blush
- Very compact plant
- Moderate-acid sweet flavor





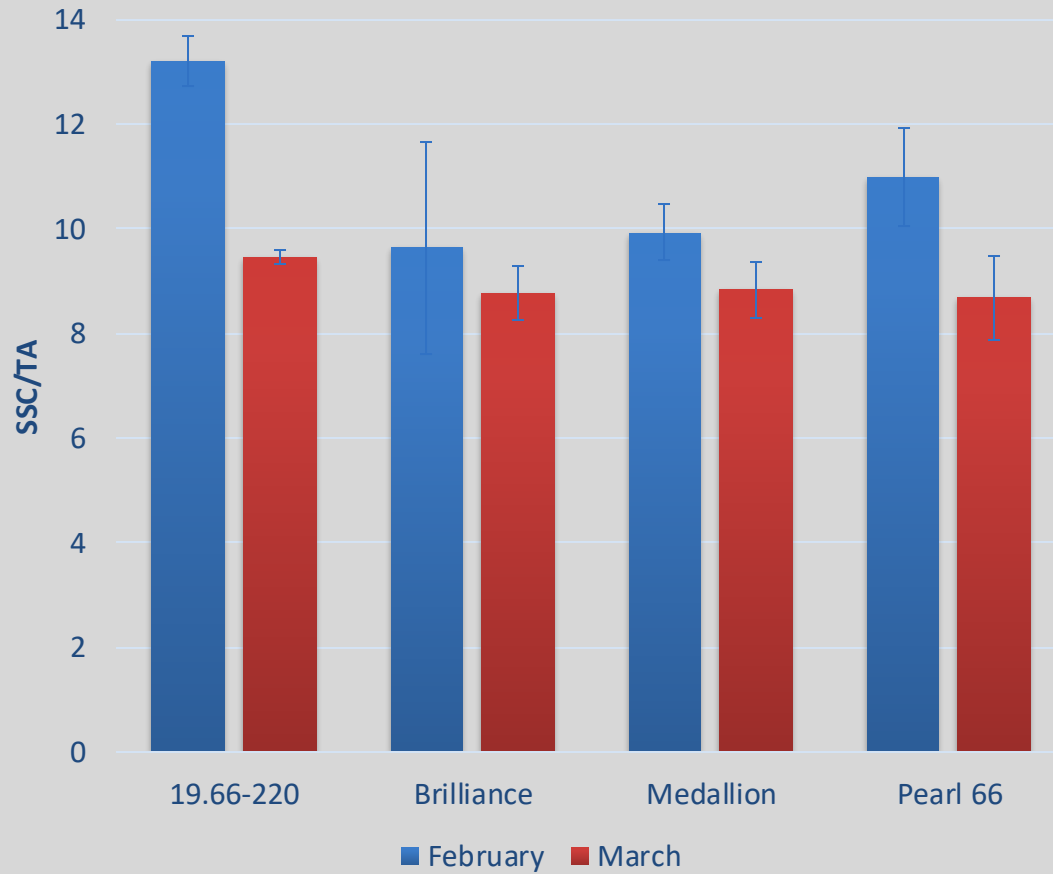


Soluble Solids





SSC/TA Ratio





- '24-'25 Season ~10 total acres of trials
- '25-'26 Season Commercial Availability





Acknowledgments

Lab Members

- Luis Osorio
- Geo Garcia
- Catalina Moyer
- Angelita Arredondo
- Sujeet Verma
- Manuela Rodriguez

Collaborators

- Natalia Peres
- Anne Plotto
- Seonghee Lee
- Steve Sargent

Support

- FFSP
- EMCO CAL
- FL Ag Exp Station
- GCREC Staff