



# **FL 20.34-183 and FL 20.80-4 Strawberries**

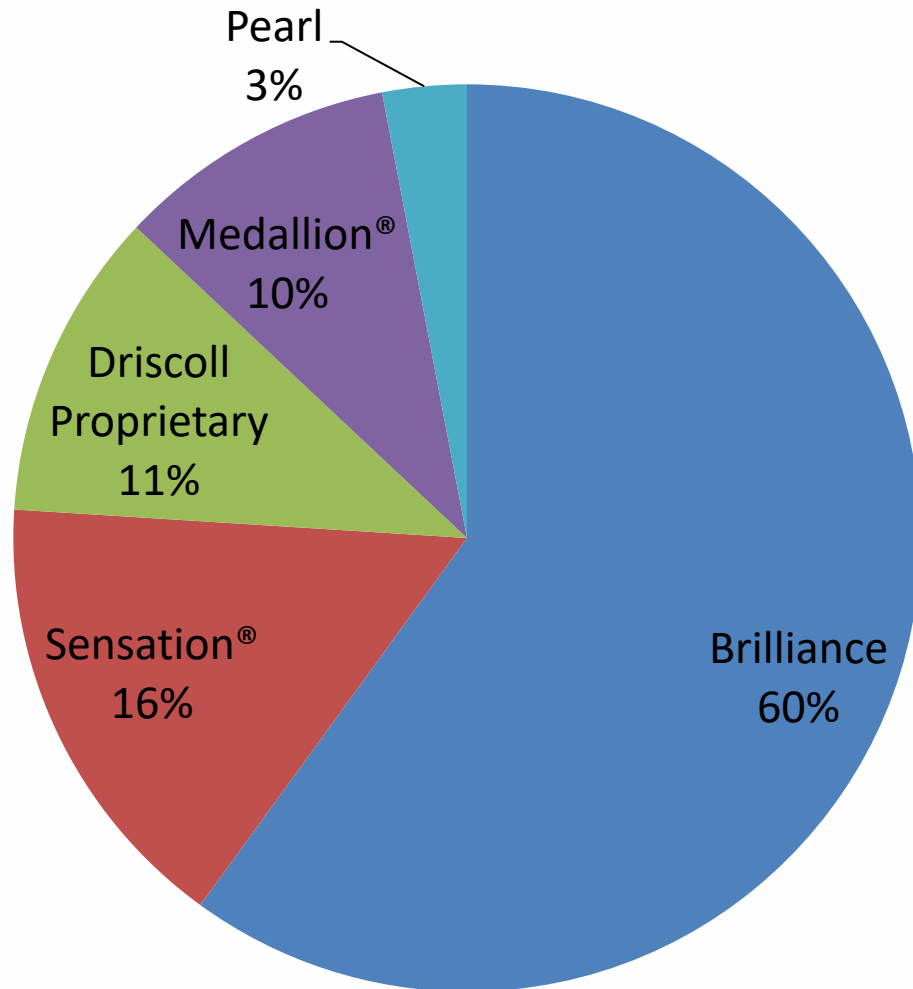
HOS Cultivar Release Advisory  
Committee

May 16, 2023

Vance M. Whitaker, Cheryl Dalid, Luis Osorio,  
Natalia Peres, Seonghee Lee and Anne  
Plotto



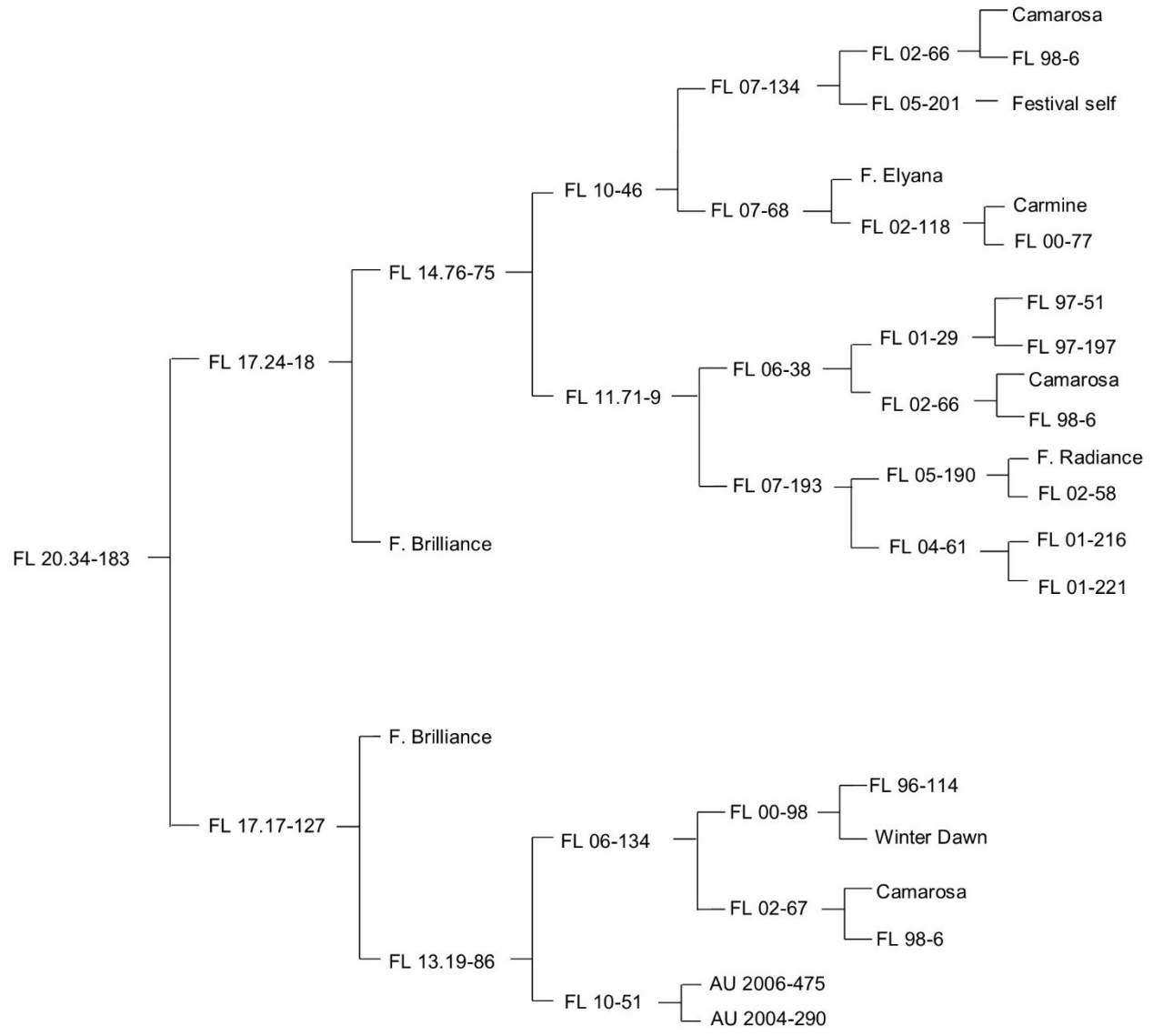
# Estimated Acreage 2022-23





- Similar characteristics to 'Florida Brilliance'
- Improved fruit size
- Phytophthora resistance

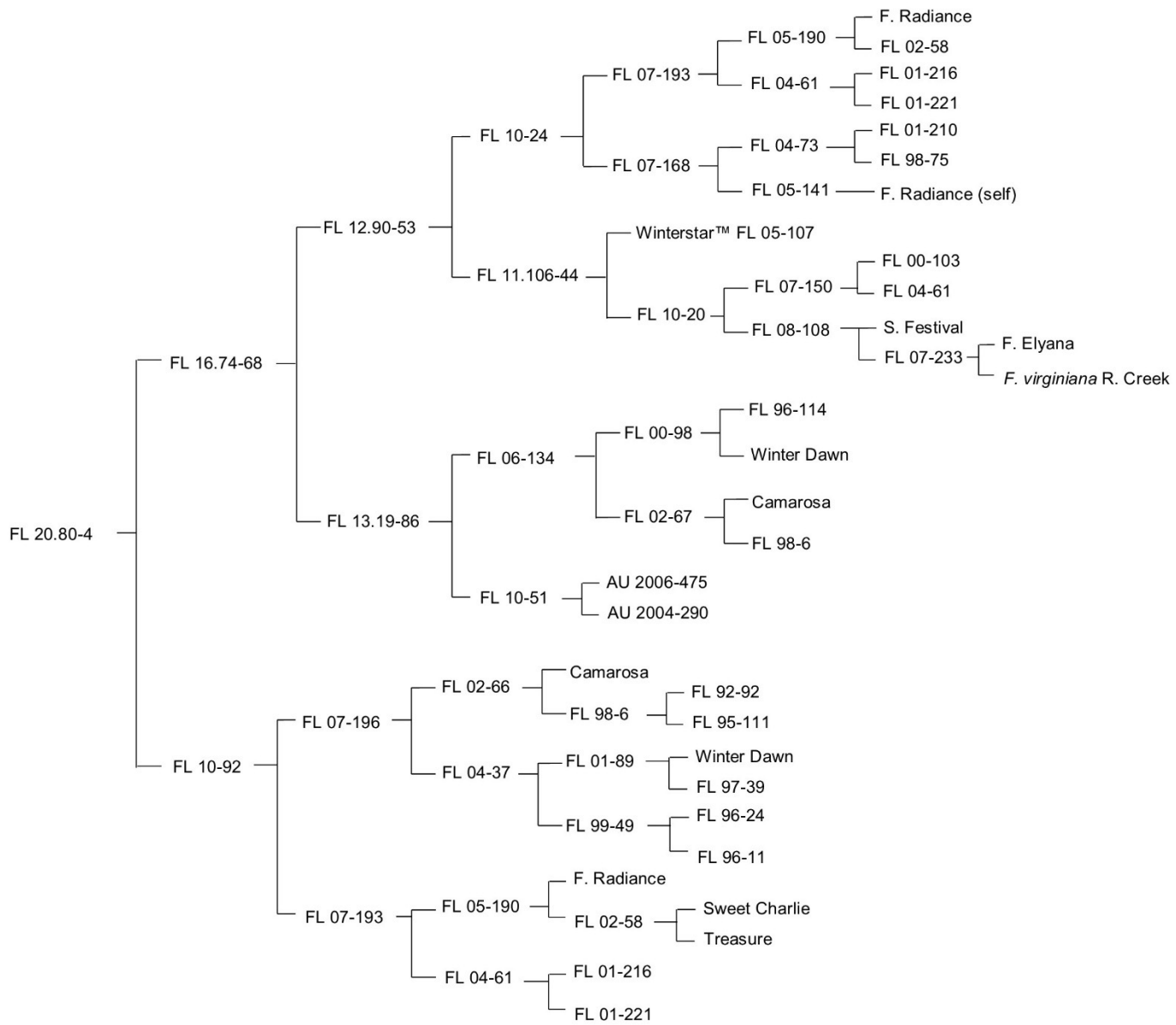






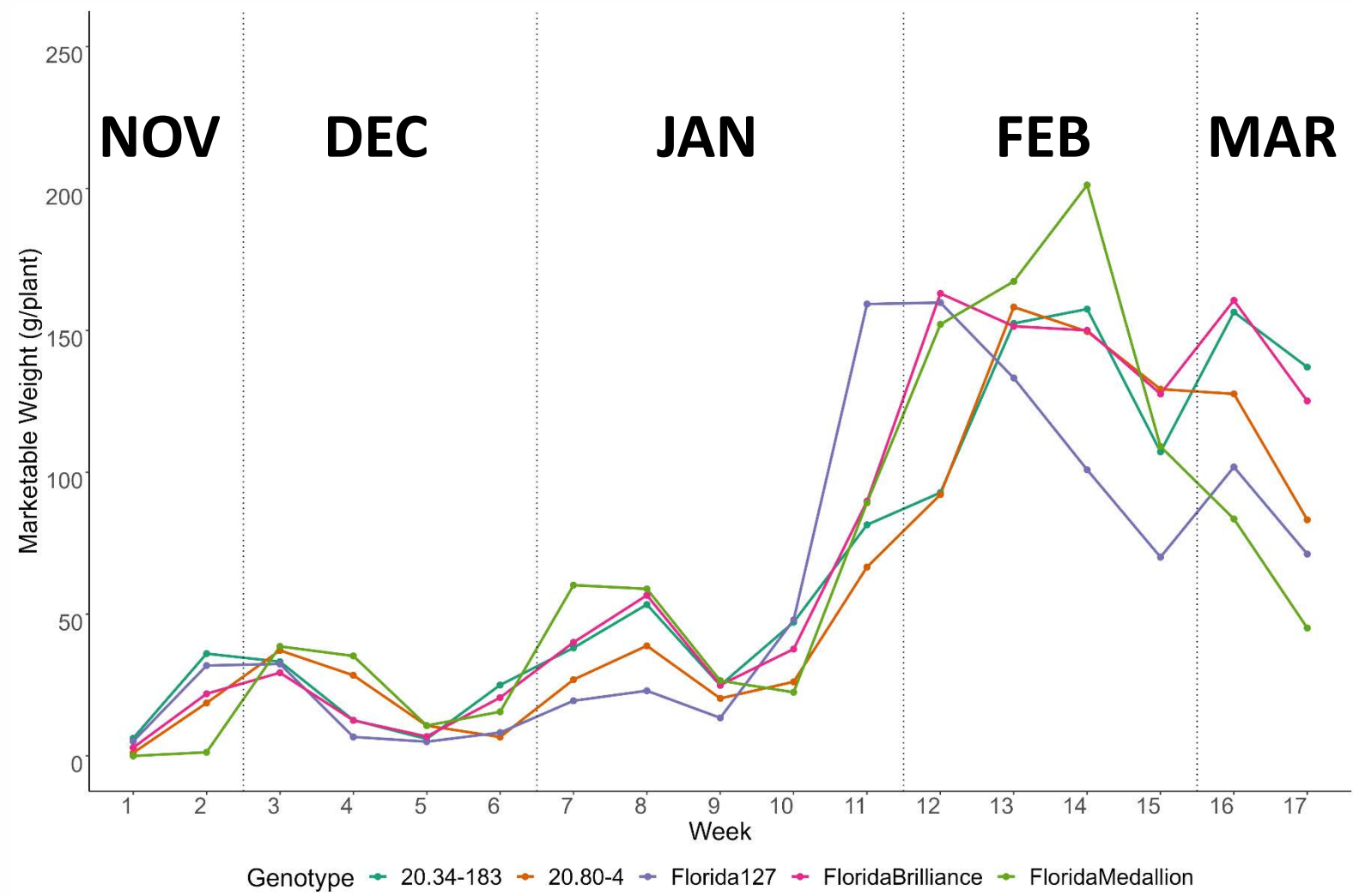
- Improved *Neopestalotiopsis* resistance
- Broad disease resistance package
- Excellent flavor similar to Medallion®





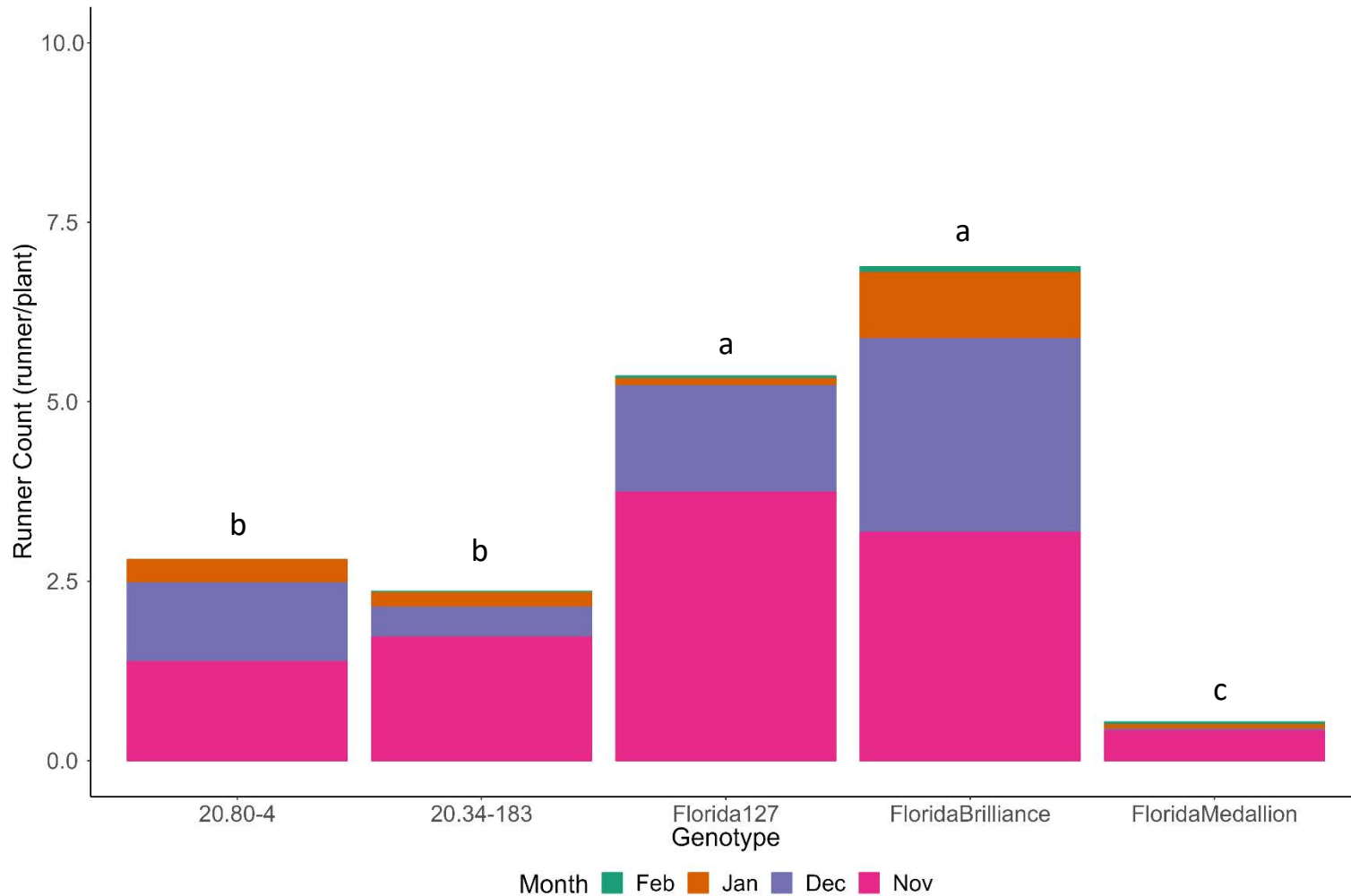


# Marketable Yield





# Runnering







Cultivar	SSC (%)	pH	TA (%)	SSC/TA
<i>January 2023</i>				
FL Brilliance	7.23 c	3.66 ab	0.80 c	9.16 b
FL Medallion	8.91 b	3.59 b	0.88 ab	10.24 ab
FL 20.80-4	9.63 a	3.74 a	0.87 bc	11.47 a
FL 20.34-183	8.67 b	3.59 b	0.98 a	9.26 b
<i>February 2023</i>				
FL Brilliance	7.60 a	3.81 a	0.63 b	12.04 ab
FL Medallion	8.50 a	3.76 ab	0.64 ab	13.03 a
FL 20.80-4	8.22 a	3.79 ab	0.64 ab	13.01 a
FL 20.34-183	7.69 a	3.71 b	0.71 a	10.94 b
<i>March 2023</i>				
FL Brilliance	6.87 b	3.82 a	0.56 c	12.35 a
FL Medallion	9.27 a	3.77 a	0.71 ab	13.12 a
FL 20.80-4	8.51 a	3.76 a	0.65 b	13.17 a
FL 20.34-183	7.47 b	3.67 b	0.76 a	9.65 b



# Disease Overview

Disease	Brilliance	Medallion	20.34-183	20.80-4
Anthracnose fruit rot	R	S	R	R
Angular leaf spot	MS	MS	MS	MS
Botrytis fruit rot	S	MS	MS	MS
Charcoal rot	MR	S	MS	R
Colletotrichum crown rot	MS	MS	S	MS
Neopestalotiopsis sp.	HS	S	S	MS
Phytophthora root rot	S	S	R	R
Powdery mildew	MR	S	MR	MS

HR = highly resistant; R = resistant; MR = moderately resistant; MS = moderately susceptible; S = susceptible; HS = highly susceptible



# Neopestalotiopsis sp.

Cultivar	High Disease Pressure		Low Disease Pressure	
	Rating		Rating	
Brilliance	4.3	a	4.3	a
Sensation®	4.0	a	4.1	a
Medallion®	3.6	a	-	
FL 20.34-183	3.7	a	-	
FL 20.80-4	3.0	ab	1.7	b



## Timeline

7 Grower Trials 2023

FSGA Trials 2023

Commercial Availability 2024



## Projected Mother Plants

FL 20.34-183	500,000
FL 20.80-4	1,250,000



## Lab Members

- Luis Osorio
- Geo Garcia
- Catalina Moyer
- Angelita Arredondo
- Sujeet Verma
- Manuela Rodriguez

## Support

- FSGA
- FFSP
- FL Ag Exp Station
- GCREC Staff